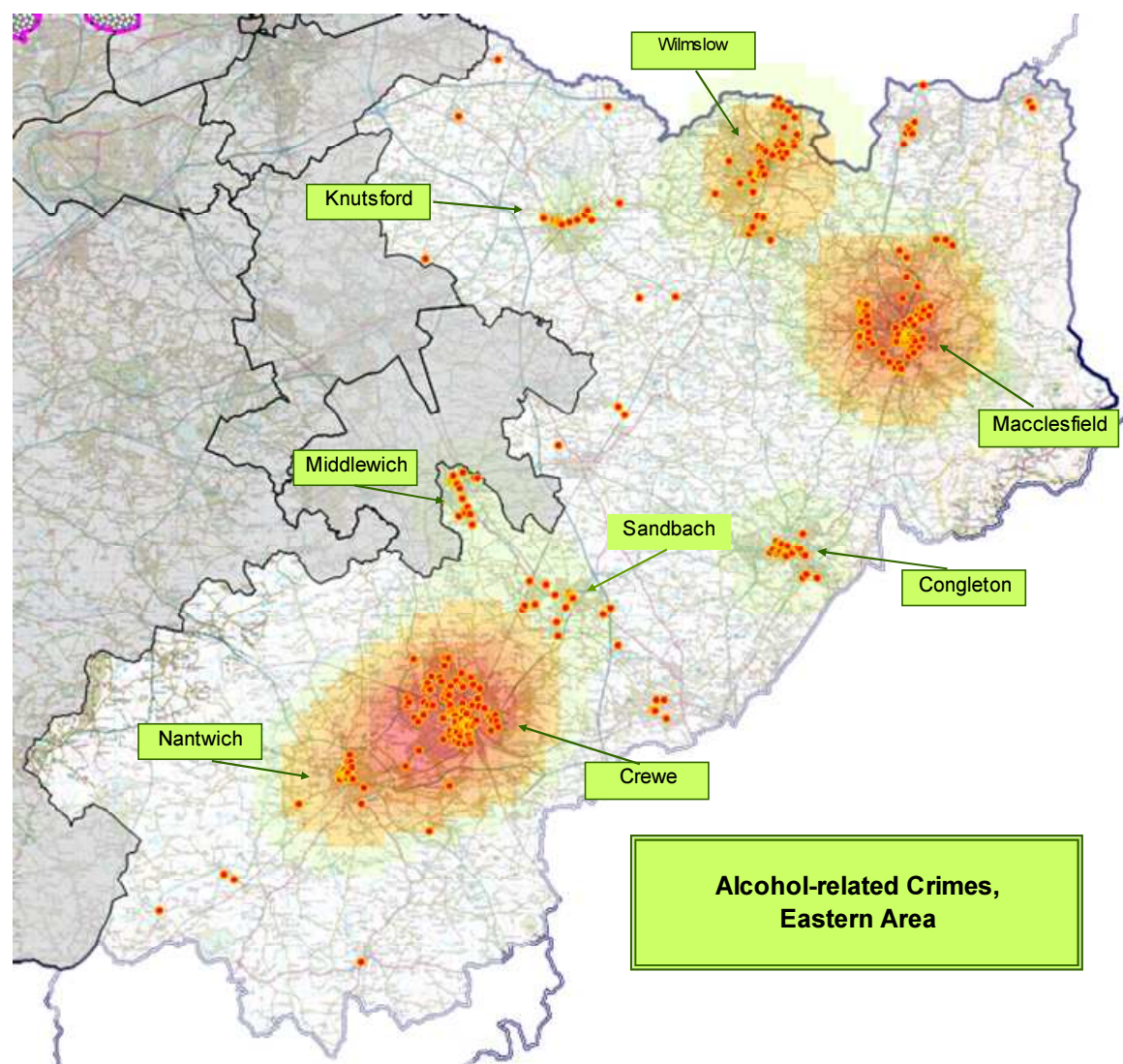


CHESHIRE EAST – ALCOHOL RELATED CRIME & INCIDENTS

1. All Alcohol Related Offences between 0000-0600hrs



During the 12 month period from 1st November 2012 to 31st October 2013 there were **519** reported Alcohol flagged crimes between 00:00 and 06:00.

Hotspot mapping indicates concentrations of offences in Crewe, Macclesfield and Wilmslow.

The top offences by Home Office Group were 8N Assault with injury 32.4%, 105A Assault without injury 28.5%, 9A Public fear, alarm & distress 5.6% and 58C Criminal damage to a vehicle 5.6%.

The busiest three months for offences were December 2012 (75), March (52) and August (50).

The combined peak days/times for offences were Saturday and Sunday between 00:00 and 04:00.

Crime Type	Count	%
Assault with injury	168	32.4%
Assault without injury	148	28.5%
Criminal Damage/Vehicle	29	5.6%
Public fear/alarm/distress	29	5.6%
Criminal Damage/Dwelling	25	4.8%
Criminal Damage/Building other	21	4.0%
Other Criminal Damage	17	3.3%
Other offences state/public order	10	1.9%
Shoplifting	9	1.7%
Assault without injury on a constable	7	1.3%
Possession controlled drugs (except cannabis)	6	1.2%
Possession controlled drugs (cannabis)	6	1.2%
Rape of a female aged 16 and over	5	1.0%
Racially or religiously aggravated public fear, alarm or distress	5	1.0%
Theft from the person	4	0.8%
Racially or religiously aggravated assault without injury	4	0.8%
Arson not endangering life	3	0.6%
Possession of other weapons	2	0.4%
Sexual assault on a female aged 13 or over	2	0.4%
Burglary in a dwelling	2	0.4%
Aggravated vehicle taking	2	0.4%
Theft - Making Off Without Payment	2	0.4%
Assault with Intent to cause Serious Harm	2	0.4%
Theft in a dwelling other than from automatic machine/meter	1	0.2%
Theft from a vehicle	1	0.2%
Other theft	1	0.2%
Threat or possession with intent to commit criminal damage	1	0.2%
Interfering with a motor vehicle	1	0.2%
Dangerous driving	1	0.2%
Threats to kill	1	0.2%
Racially or Religiously Aggravated Criminal Damage	1	0.2%
Exposure and voyeurism	1	0.2%
Harassment	1	0.2%
Racially or Religiously Aggravated Assault with injury	1	0.2%
Total Offences	519	100.0%

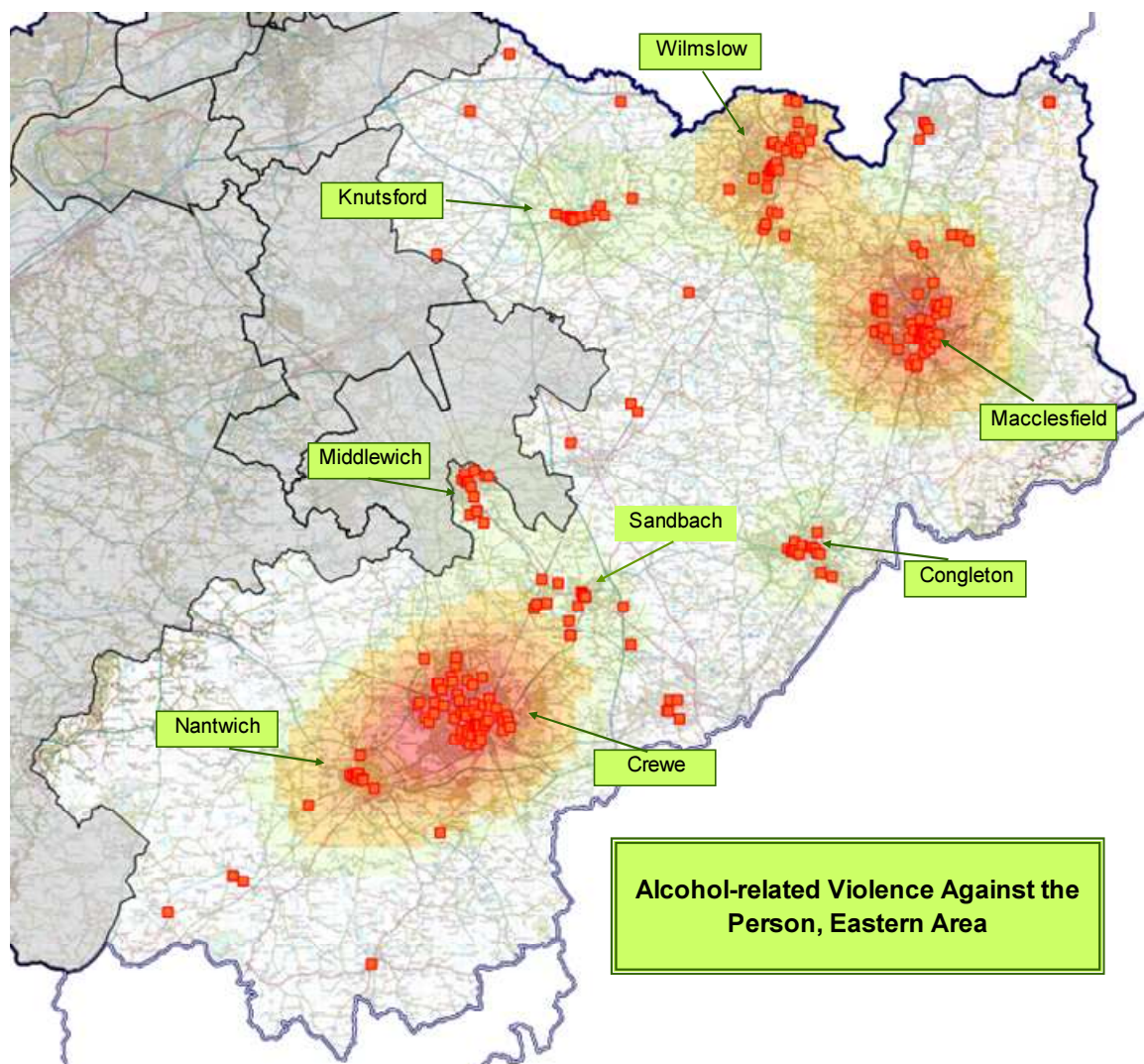
Month	Total
November	42
December	75
January	33
February	39
March	52
April	31
May	41
June	45
July	38
August	50
September	26
October	47
Total	519

Time Range	Mon	Tue	Wed	Thu	Fri	Sat	Sun	Total
00:00-00:59	14	5	8	13	13	39	42	134
01:00-01:59	8	7	10	8	12	35	47	127
02:00-02:59	4	4	6	8	5	33	42	102
03:00-03:59	7	1	4	6	4	41	24	87
04:00-04:59	4	4	2	3	7	11	18	49
05:00-05:59	1		2	2	3	6	6	20
Total	38	21	32	40	44	165	179	519



125+

2. Alcohol Related VAP (Violence Against the Person) Offences between 0000-0600hrs



During the 12 month period from 1st November 2012 to 31st October 2013 there were 368 reported Alcohol flagged violence against the person crimes between 00:00 and 06:00.

Hotspot mapping indicates concentrations of offences in Crewe, Macclesfield and Wilmslow.

The top offences by Home Office Group were 8N Assault with injury 45.7%, 105A Assault without injury 40.2%, and 9A Public fear, alarm & distress 7.9%.

The busiest three months for offences were December 2012 (59), March (37) and August (34).

The combined peak days/times for offences were Saturday and Sunday between 00:00 and 04:00.

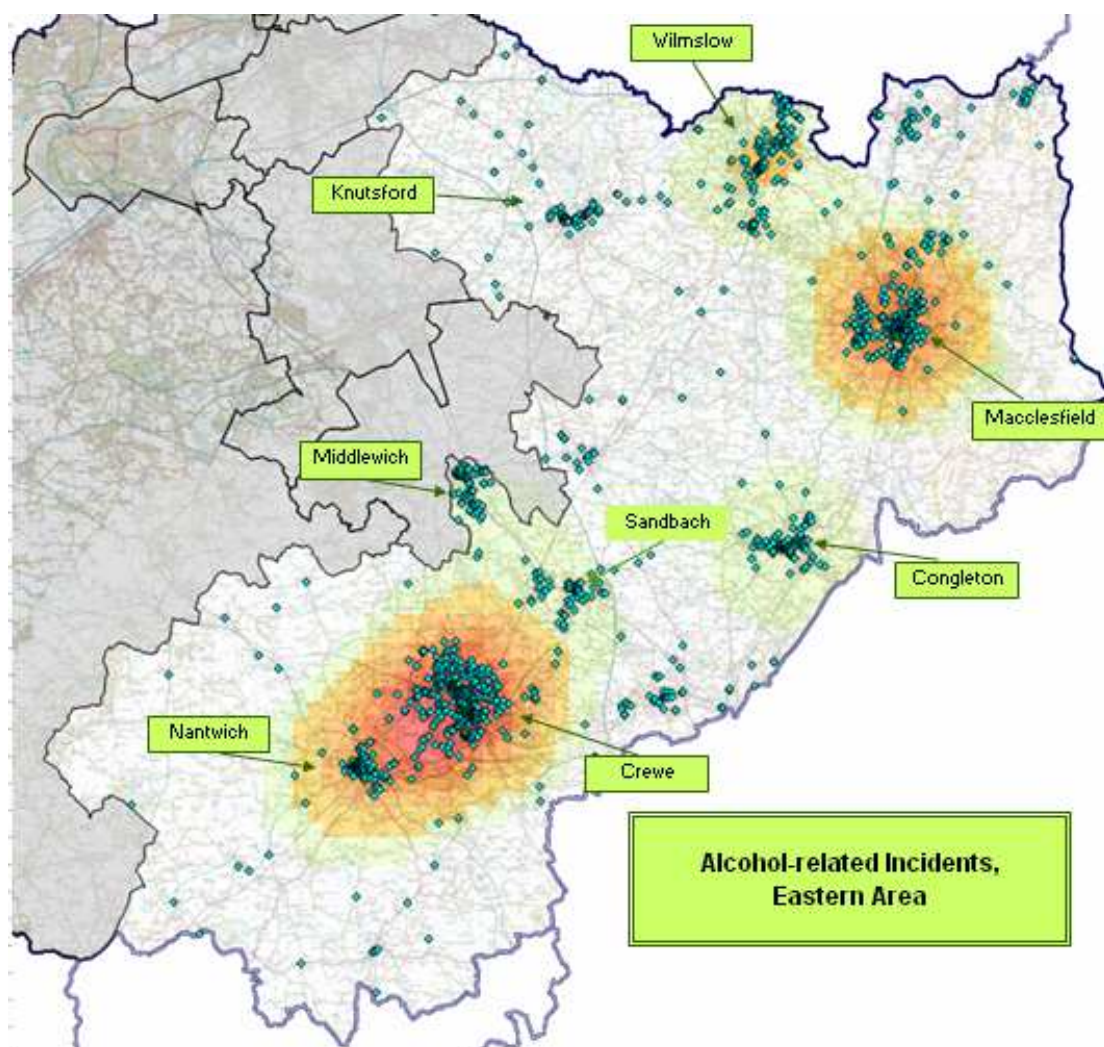
Crime Type	Count	%
Assault with injury	168	45.7%
Assault without injury	148	40.2%
Public fear/alarm/distress	29	7.9%
Assault without injury on a constable	7	1.9%
Racially or religiously aggravated public fear, alarm or distress	5	1.4%
Racially or religiously aggravated assault without injury	4	1.1%
Possession of other weapons	2	0.5%
Assault with Intent to cause Serious Harm	2	0.5%
Threats to kill	1	0.3%
Harassment	1	0.3%
Racially or Religiously Aggravated Assault with injury	1	0.3%
Total VAP Offences	368	100.0%

Month	Total
November	33
December	59
January	22
February	25
March	37
April	22
May	30
June	31
July	31
August	34
September	16
October	28
Total	368

Time Range	Mon	Tue	Wed	Thu	Fri	Sat	Sun	Total
00:00-00:59	10	4	6	7	10	28	34	99
01:00-01:59	6	3	6	3	8	26	35	87
02:00-02:59	4	3	4	6		29	31	77
03:00-03:59	4		3	6	2	28	14	57
04:00-04:59	2	1	1	2	3	10	14	33
05:00-05:59			2	2	2	4	5	15
Total	26	11	22	26	25	125	133	368



3. All Alcohol Related Incidents between 0000-0600hrs



During the 12 month period from 1st November 2012 to 31st October 2013 there were 2037 reported incidents with an Alcohol qualifier between 00:00 and 06:00.

Hotspot mapping indicates concentrations of incidents in Crewe/Nantwich, Macclesfield and Wilmslow.

The top three types of incident by closure code were BP – Personal anti-social behaviour 18.2%, BN - Nuisance anti-social behaviour 15.5%, and SD – Concern for Safety 14.5%.

The busiest three months for offences were December 2012 (253), August (204) and October (182).

The combined peak days/times for offences were Saturday and Sunday between 00:00 and 04:00.

Incident Type	Count	%
PERSONAL ANTI SOCIAL BEHAVIOUR	371	18.2%
NUISANCE ANTI SOCIAL BEHAVIOUR	316	15.5%
CONCERN FOR SAFETY OR WELFARE	295	14.5%
ROAD RELATED TRAFFIC OFFENCE	231	11.3%
DOMESTIC INCIDENTS - BETWEEN ADULTS	185	9.1%
VIOLENCE / HARASSMENT / THREAT TO LIFE	184	9.0%
SUSPICIOUS PERSON / VEHICLE / ACTIVITY	84	4.1%
CRIME NOT VERIFIED	69	3.4%
ENVIRONMENTAL ANTI SOCIAL BEHAVIOUR	48	2.4%
POLICE GENERATED	41	2.0%
COLLAPSE / ILLNESS / INJURY / TRAPPED	29	1.4%
CRIMINAL DAMAGE/ARSON	28	1.4%
ABANDONED PHONE CALLS	26	1.3%
DAMAGE ONLY RTC	19	0.9%
OTHER NOTIFIABLE CRIME	19	0.9%
MISSING PERSON - ANY RISK TYPE	12	0.6%
SIMPLE ADVICE/DIRECTIONS	11	0.5%
RTC - INJURY - SERIOUS / MINOR	11	0.5%
THEFT OTHER	8	0.4%
LICENSING - ALCOHOL, TOBACCO, GAMBLING, ETC	7	0.3%
CIVIL DISPUTES	7	0.3%
CRIME RELATED INCIDENT	4	0.2%
PROVENT POTENTIAL BREACH OF THE PEACE	4	0.2%
SEXUAL OFFENCES	3	0.1%
DOMESTIC INCIDENTS - INVOLVING A JUVENILE	3	0.1%
HOAX CALLS	3	0.1%
HIGHWAY DISRUPTION	3	0.1%
BURGLARY DWELLING	2	0.1%
DRUGS	2	0.1%
COMPLAINTS AGAINST POLICE	2	0.1%
PROPERTY - LOST / FOUND / FIREARMS OR WEAPONS SURRENDERED	2	0.1%
BAIL BREACHES / WANTED PERSON	2	0.1%
CENTRAL STATION ALARM FALSE ACTIVATION	1	0.0%
THEFT OF MOTOR VEHICLE	1	0.0%
THEFT FROM MOTOR VEHICLE	1	0.0%
OTHER	1	0.0%
ANIMAL CONCERN/CRUELTY	1	0.0%
INSECURE PREMISES	1	0.0%
TOTAL	2037	100.0%

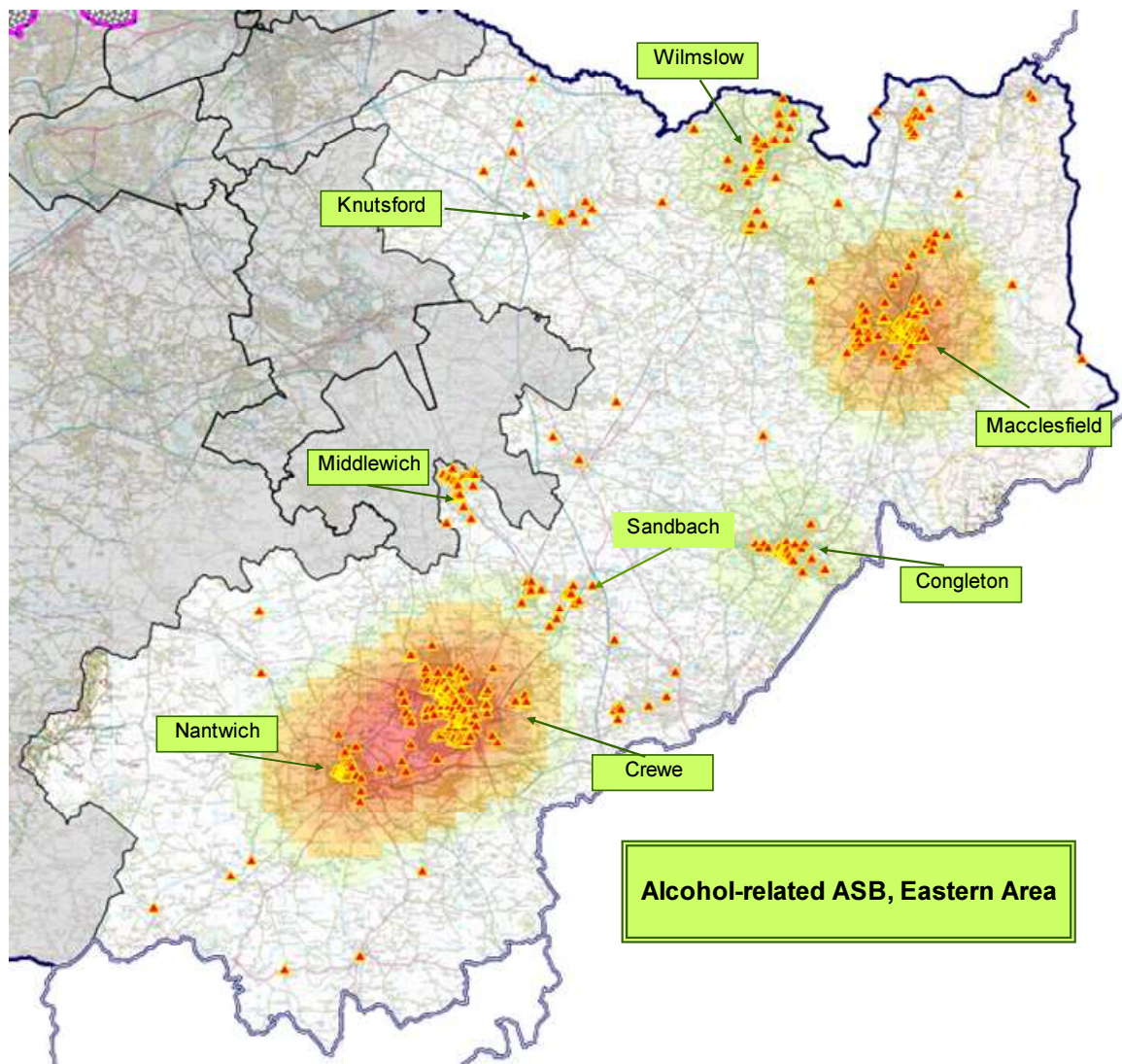
Month	Total
November	172
December	253
January	158
February	152
March	138
April	170
May	151
June	136
July	144
August	204
September	177
October	182
Total	2037

Time Range	Mon	Tue	Wed	Thu	Fri	Sat	Sun	Total
00:00-00:59	42	41	36	45	65	172	173	574
01:00-01:59	43	33	38	31	44	164	166	519
02:00-02:59	25	24	29	22	32	141	148	421
03:00-03:59	21	12	16	9	30	114	106	308
04:00-04:59	10	7	6	9	18	39	54	143
05:00-05:59	6	3	3	8	9	24	19	72
Total	147	120	128	124	198	654	666	2037



300+

4. All Alcohol Related Anti-Social Behaviour Incidents between 0000-0600hrs



During the 12 month period from 1st November 2012 to 31st October 2013 there were 735 reported anti-social behaviour incidents with an Alcohol qualifier between 00:00 and 06:00.

Hotspot mapping indicates concentrations of incidents in Crewe/Nantwich and in Macclesfield.

Anti-social behaviour incidents by closure code were BP – Personal anti-social behaviour 50.5%, BN - Nuisance anti-social behaviour 43.0%, and BE – Environmental anti-social behaviour 6.5%.

The busiest three months for offences were December 2012 (88), August (74) and October (65).

The combined peak days/times for offences were Saturday and Sunday between 00:00 and 04:00.

ASB Type	Count	%
ASB Personal	371	50.5%
ASB Nuisance	316	43.0%
ASB Environmental	48	6.5%
Total VAP Offences	735	100.0%

Month	Total
November	59
December	88
January	59
February	53
March	61
April	63
May	53
June	52
July	53
August	74
September	55
October	65
Total	735

Time Range	Mon	Tue	Wed	Thu	Fri	Sat	Sun	Total
00:00-00:59	15	15	13	18	23	64	71	219
01:00-01:59	15	13	13	5	19	62	60	187
02:00-02:59	5	7	13	4	10	54	56	149
03:00-03:59	4	5	5	1	17	55	42	129
04:00-04:59		2	1	3	6	10	15	37
05:00-05:59	2	1		3	1	4	3	14
Total	41	43	45	34	76	249	247	735

40+
60+

100+